



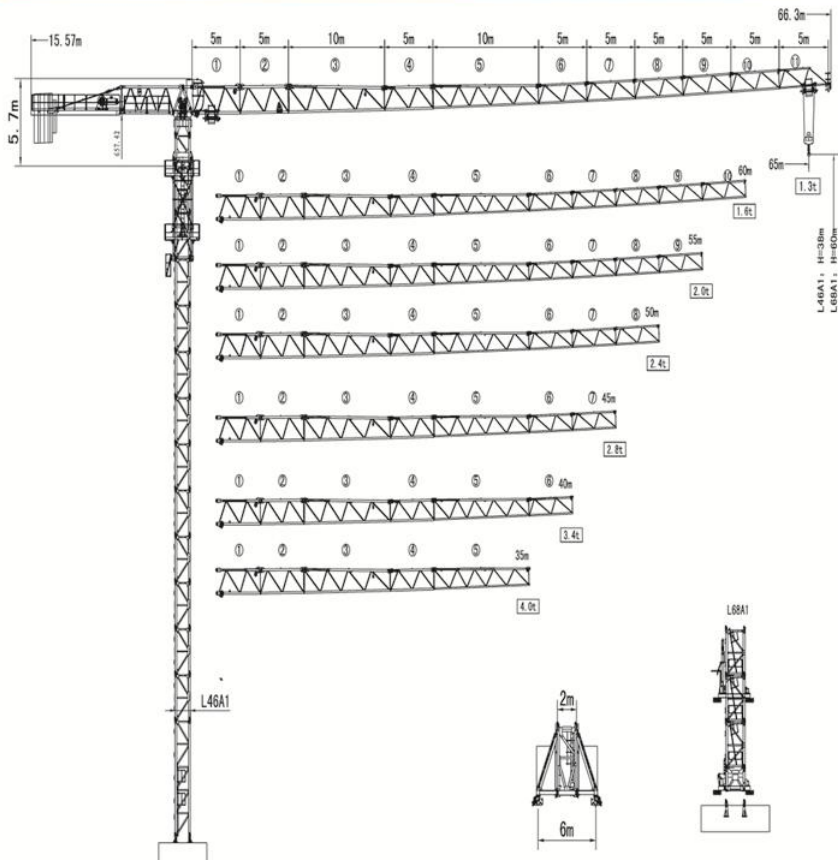
平头式塔式起重机 设备配置与技术参数

QTZ125 (PT6513)

本数据仅供参考，如有更改，恕不另行通知

This data is for informational purposes only, and is subject to change without prior notice

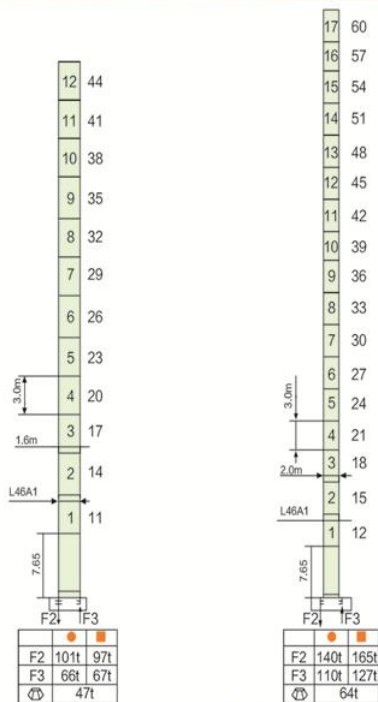
外形尺寸 Outline Dimensions



载荷特性表 Load Diagrams 8t

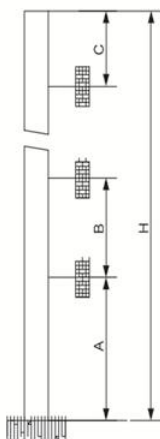
R ₀	Full	R.C _{max} (%)	C _{max} (%)	15	20	25	30	35	40	45	50	55	60	65
65m		15.2	8.0	8.0	5.84	4.47	3.58	2.94	2.47	2.11	1.82	1.58	1.39	1.22
		27.8	4.0	4.0	4.0	4.0	3.65	3.02	2.55	2.19	1.90	1.66	1.47	1.30
60m		16.2	8.0	8.0	6.26	4.80	3.85	3.18	2.68	2.29	1.98	1.73	1.52	
		29.5	4.0	4.0	4.0	4.0	3.93	3.26	2.76	2.37	2.06	1.81	1.60	
55m		17.3	8.0	8.0	6.80	5.23	4.21	3.48	2.94	2.52	2.19	1.92		
		31.8	4.0	4.0	4.0	4.0	4.0	3.56	3.02	2.60	2.27	2.0		
50m		18.1	8.0	8.0	7.15	5.51	4.43	3.67	3.11	2.67	2.33			
		33.2	8.0	4.0	4.0	4.0	4.0	3.75	3.19	2.75	2.40			
45m		18.3	8.0	8.0	7.26	5.60	4.51	3.74	3.16	2.72				
		33.6	8.0	4.0	4.0	4.0	4.0	3.82	3.24	2.80				
40m		19.0	8.0	8.0	7.58	5.85	4.72	3.91	3.32					
		35.0	8.0	4.0	4.0	4.0	4.0	4.0	3.4					
35m		19.0	8.0	8.0	7.58	5.85	4.72	3.91						
		35.0	8.0	4.0	4.0	4.0	4.0	4.0						

塔身截面 Masts



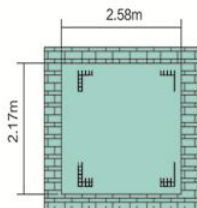
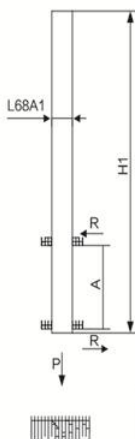
- 工作状态支反力 Reactions in service
- 非工作状态支反力 Reactions out of service
- ⊕ 不含平衡重及压重塔机重量 Total weight of free standing crane (exclude Counter weight & ballast)

附着位置及塔机高度 Anchorage



Mast	A	B	C	H
L46A1	33.1m	24m	32m	200m >200m*
L68A1	48m	36m	45m	200m >200m*

附着道数: Number of tie collar=(H-A-C)/B+1



	H1	A	R	P
L68A1	34m	12.2m	25t	82t

机构 Mechanisms 8t

名称	机构代号	工作速度 (m/min)		起重量(t)	容绳量(m)	电机功率
起升 Hoisting	30JLD20☆	双绳 2 fall	0-40	4.0	360 >360*	30/30
			0-80	2.0		
		四绳 4 fall	0-20	8.0		
			0-40	4.0		
	30LVF20	双绳 2 fall	0-40	4.0	400 >400*	30
			0-80	2.0		
		四绳 4 fall	0-20	8.0		
			0-40	4.0		
变幅机构 Trolleying	BE3360☆	40/20			3.3/2.2	
	BP5065X	0-63			5.5	
回转机构 Slewing	HR.100.195☆	0-0.6			5.5×2	
	RVF5	0-0.6			5.5×2	
电源 Power	380V (± 10%) /50Hz*					

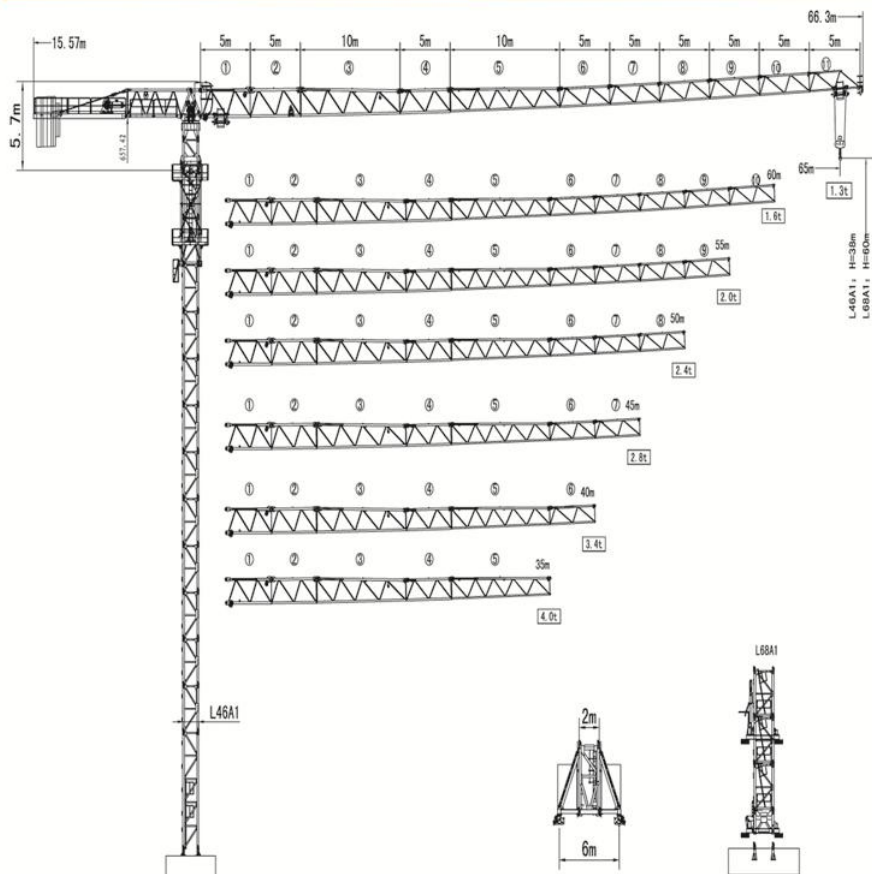
*请与制造商联系 contact us please

☆标准配置 standamrd configuration

平衡重 Counter weight

			PHZ3000	PHZ1500	PHZ1000
65m	15.57m	16500	3	3	3
60m	15.57m	15500	3	3	2
55m	15.57m	14500	3	3	1
50m	15.57m	13500	3	3	
45m	15.57m	12000	3	2	
40m	15.57m	11000	3		2
35m	15.57m	10000	3		1

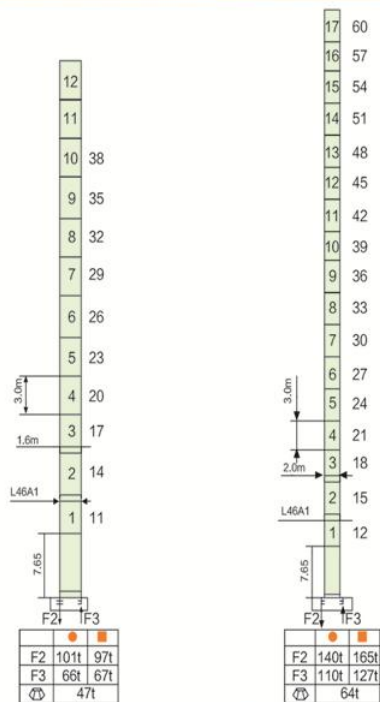
外形尺寸 Outline Dimensions



载荷特性表 Load Diagrams 10t

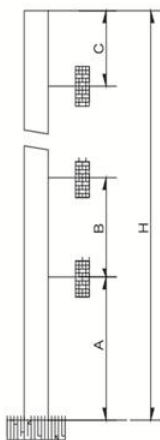
R ₉₀	Fail	R.C _{max} (t)	C _{max} (t)	15	20	25	30	35	40	45	50	55	60	65
65m		12.6	10.0	8.18	5.84	4.47	3.58	2.94	2.47	2.11	1.82	1.58	1.39	1.22
		23.0	5.0	5.0	5.0	4.55	3.65	3.02	2.55	2.19	1.90	1.66	1.47	1.30
60m		13.3	10.0	10.0	6.26	4.80	3.85	3.18	2.68	2.29	1.98	1.73	1.52	
		24.5	5.0	5.0	5.0	4.88	3.93	3.26	2.76	2.37	2.06	1.81	1.60	
55m		14.3	10.0	10.0	6.80	5.23	4.21	3.48	2.94	2.52	2.19	1.92		
		26.3	5.0	5.0	5.0	5.0	4.28	3.56	3.02	2.60	2.27	2.0		
50m		14.9	10.0	10.0	7.15	5.51	4.43	3.67	3.11	2.67	2.33			
		27.5	5.0	5.0	5.0	5.0	4.51	3.75	3.19	2.75	2.40			
45m		15.1	10.0	10.0	7.26	5.60	4.51	3.74	3.16	2.72				
		27.8	5.0	5.0	5.0	5.0	4.59	3.82	3.24	2.80				
40m		15.7	10.0	10.0	7.58	5.85	4.72	3.91	3.32					
		28.9	5.0	5.0	5.0	5.0	4.79	4.0	3.4					
35m		15.7	10.0	10.0	7.58	5.85	4.72	3.91						
		28.9	5.0	5.0	5.0	5.0	4.79	4.0						

塔身截面 Masts



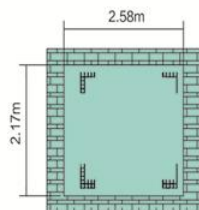
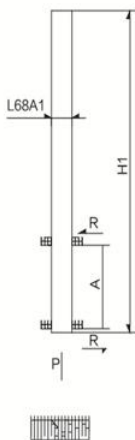
- 工作状态支反力 Reactions in service
 - 非工作状态支反力 Reactions out of service
- ⚠ 不含平衡重及压重塔机重量 Total weight of free standing crane (exclude Counter weight & ballast)

附着位置及塔机高度 Anchorage



Mast	A	B	C	H
L46A1	33.1m	24m	32m	200m >200m*
L68A1	48m	36m	45m	200m >200m*

附着道数: Number of tie collar=(H-A-C)/B+1



	H1	A	R	P
L68A1	34m	12.2m	25t	82t

机构 Mechanisms 10t

名称	机构代号	工作速度 (m/min)		起重量(t)	容绳量(m)	电机功率
起升 Hoisting	37JLD25☆	双绳 2 fall	0-40	5.0	400 >400*	37/37
			0-80	2.5		
		四绳 4 fall	0-20	10.0		
			0-40	5.0		
	45LVF25	双绳 2 fall	0-40	5.0	550 >550*	45
			0-80	2.5		
		四绳 4 fall	0-20	10.0		
			0-40	5.0		
变幅机构 Trolleying	BE5060☆	60/30/8.4			5/3.7/1.1	
	BP5065X	0-63			5.5	
回转机构 Slewing	HR.100.195☆	0-0.6			5.5×2	
	RVF5	0-0.6			5.5×2	
电源 Power	380V (±10%) /50Hz*					

*请与制造商联系 contact us please

☆标准配置 standamrd configuration

平衡重 Counter weight

			PHZ3000	PHZ1500	PHZ1000
65m	15.57m	16500	3	3	3
60m	15.57m	15500	3	3	2
55m	15.57m	14500	3	3	1
50m	15.57m	13500	3	3	
45m	15.57m	12000	3	2	
40m	15.57m	11000	3		2
35m	15.57m	10000	3		1



山东大汉建设机械股份有限公司

地址：山东省济南市章丘区明水经济开发区赭山工业园

电话：+86 (531) 83260789

网址：www.dhtj.com

邮编：250200

Shandong Dahan Construction Machinery Co.,Ltd.

Add : Zheshan Industrial Part,Mingshui Development
Zone,Zhangqiu,Jinan City,Shandong Province,China

TEL : +86 (531) 83260789

Web : [http:// www.dhtj.com](http://www.dhtj.com)

ZIP CODE : 250200